



TOHOKU UNIVERSITY

<http://www.tohoku.ac.jp/en>

TOHOKU UNIVERSITY

Tohoku University's Approach to Globalization
Investing in knowledge as a world-class university
—Pursuing international excellence in education and research—

Office of the President, Tohoku University
2-1-1, Katahira, Aoba-ku, Sendai 980-8577 Japan
Phone: +81-22-217-5009
E-mail: sgu@grp.tohoku.ac.jp

President's Message

Since its founding, Tohoku University has followed the tradition of "Research First", believed in the ideal of "Open Doors" and embraced the spirit of "Practice-oriented Research and Education". Using these three ideals as the foundation of our top caliber research and education, we have consistently aimed to contribute our research successes to help resolve various societal problems, as well as continue to cultivate capable leaders who can maintain and advance a peaceful and equitable society.

The world we live in is constantly undergoing rapid social changes, and as such, we must be prepared to live in this new global era. Universities must be able to properly educate the young people born in this global era, and to lead the way in the creation of a new base of knowledge that will allow these young people to continue to innovate and perform research that will help create a sustainable world society and solve problems on a global scale.

Observing these changes both nationally and internationally, in May 2014 we sought to ascertain Tohoku University's many strengths, distinctive characteristics, and its role in society, and combined with university-wide viewpoints for future developments, created the "Tohoku University Global Vision".

As part of this vision, one element we especially empathize is the "Creation of Places to Cultivate Students Who Can Actively Participate in Global Society", where we aim to raise the global leaders of the future through our creation of new education styles and of opportunities for study abroad, both of which are essential parts of our daily efforts to improve and revolutionize education.

As one of the top thirteen universities in Japan, in 2014 Tohoku University was chosen by the Ministry of Education, Culture, Sports, Science and Technology (MEXT) to be part of the "Top Global University Project". The fruitful results of our university's "Global Initiative", which aims to improve our level of global education and research and has already been well received by MEXT, and played an important role in our selection.

Under this initiative, we intend to further accelerate the initiatives we have undertaken with the "Global 30 Project" and the "Go Global Japan Project" to create a new global education. Further, based upon this new global education, we aim to form strong partnerships with overseas universities, and create International Joint Graduate Programs in a total of eight fields with the goal of



entering the world's Top Ten Ranking in the fields of Spintronics, Materials Science, Physics for the Universe, and Earth and Environmental Sciences, as well as pushing for developments in the new disciplines of Data Science, Life Science/Brain Science(Neuro Global), Science of safety and security for human and society and Japanese Studies. Additionally, we will also seek cooperation in the foundation of our "Tohoku Forum for Creativity" and other measures aimed at consolidating our research strength.

By making use of this pamphlet, in addition to gaining an understanding of Tohoku University's globalization policies and goals, you are also showing your support as we invest in knowledge as a world-class university in our pursuit of international excellence in education and research, and I wish to thank you for this support.

January 2017,
Tohoku University, President Susumu Satomi

Outline of Tohoku University's Top Global University Project

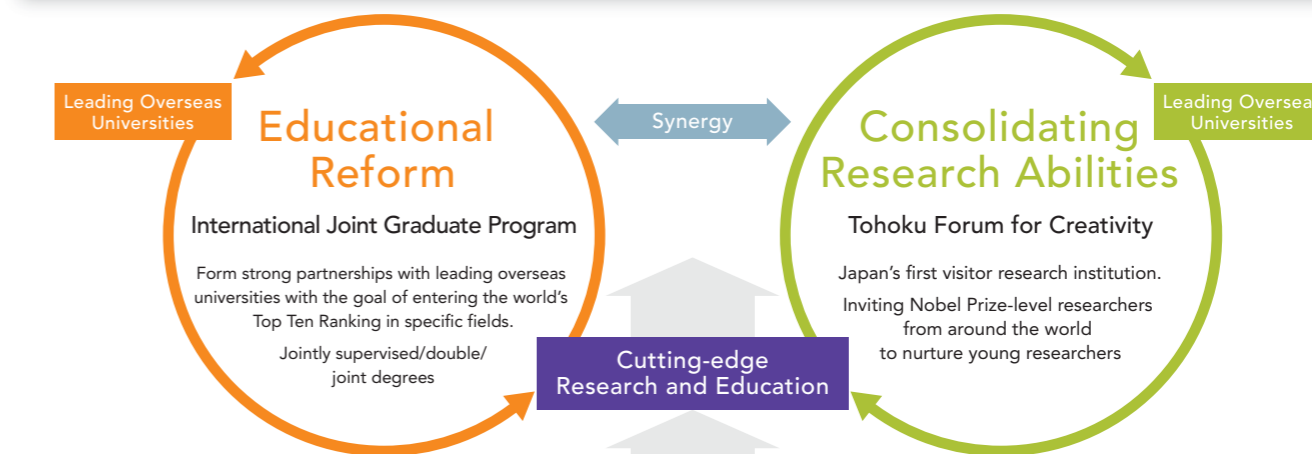


What is Tohoku University's Global Initiative?

Tohoku University plans to raise their level of internationalization, strengthen their education and research abilities, grow into a world class university, and play a main role to developments that will benefit Japan and the entire world. Achieving this will require attracting brilliant young minds from across

Japan and the world and creating a place that will "allow people to gather, learn and create", and through high level education, create real change in society, while giving these young people a high level "global mindset".

Investing in knowledge as a world-class university - Pursuing international excellence in education and research -



"Reforming Education and Research with Accelerated Efforts towards Internationalization"

Create an Educational Foundation to Cultivate Global Leaders

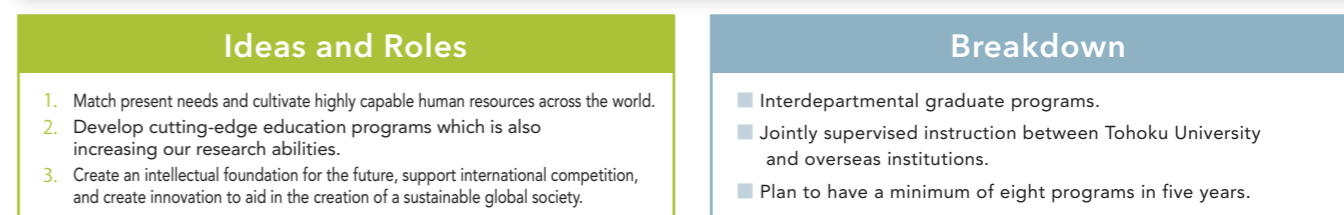
- Attractive array of international courses (A Global 30 development).
- Continuing to develop Tohoku University's Global Leader Program (TGL).
- Exponential expansion of international cooperative education.

Further improve our globalized environment

- Strategic use of overseas offices.
- Increasing efforts for global promotion.
- Actively utilizing academic exchange agreements to education.
- Bolstering office staff English skills.
- Strengthening the support network for researchers and students from overseas and for those from Tohoku University going overseas.

International Joint Graduate Programs

- Utilizing Tohoku University's strengths to make contributions to fields that will be important to humanity in the future, and to raise the level of global society.
- Gather the knowledge of Tohoku University's different departments to overcome the boundaries between disciplines and form strong cooperative education ties with leading overseas universities.



Eight International Joint Graduate Programs Established Under This Program

Four Fields Aiming to Enter the World's Top Ten Ranking

- Spintronics
- Materials Science
- Physics for the Universe
- Earth and Environmental Sciences

Challenging Four New Academic Disciplines

- Data Science
- Life Science/Brain Science (Neuro Global)
- Science of safety and security for human and society
- Japanese Studies