



CONTENTS

P1	P2	P3	P4
●Please Observe Road Rules	●Drinking Responsibly	●Towards a Drug-free Life	●Stay Informed on City Laws and Ordinances

Please Observe Road Rules

From April on, the university has received several complaints about students on bicycles and motorcycles riding recklessly. Please observe all traffic rules and ride safely. **In the event that you hit someone, do not just continue on your way. Stop to offer assistance.**

●Case 1 (Motorcycle)

A motorcycle made a sudden right turn into an intersection, almost colliding with a car coming from the opposite direction that was turning left.

●Case 2 (Bicycle)

A cyclist was riding extremely fast on a sidewalk where pedestrians were present. A pedestrian reported being frightened at almost being hit.

●Case 3 (Bicycle)

A cyclist tried to squeeze through between the sidewalk and a car that was stopped at a red light. The cyclist struck the car's side mirror, damaging it. The cyclist then continued on without stopping or apologizing.

During summer vacation, you might have plans that require you to drive long distances by motorcycle or car. As students often become involved in traffic accidents over the summer break, please read the following advice and be safe when driving to extracurricular or leisure activities.

1. Plan your route, driving time, and schedule with plenty of time to spare.
2. Be aware of your physical limitations. Do not try to drive while sleep-deprived or without taking breaks.
3. Make sure you are enrolled in vehicle/motorcycle insurance. Also, familiarize yourself with the terms of your insurance policy.
4. Observe all traffic rules.
5. If you are involved in an accident, call 110. If someone is injured in the accident, call 119. Afterwards, contact your insurance company.
6. Please also report the accident to Tohoku University (your undergraduate/graduate school department) when you are able.



Drinking Responsibly

Every year, Tohoku University students fall victim to alcohol-related accidents and injuries. When drinking, please take care of each other and be considerate so as not to create an atmosphere in which people feel pressured to drink. If you see a friend or classmate drinking excessively, please intervene.

Notes

- 1 Drinking alcohol by persons under 20 years of age is prohibited in Japan.**
- 2 Pressuring others to drink and speed drinking ("ikki nomi" etc.) by students are strictly forbidden.**

※In Japan, there have been cases of students dying from alcohol poisoning due to speed drinking. In one case, the other students who were drinking with the victim failed to take appropriate measures, such as calling an ambulance, even when the victim stopped responding to verbal prompts. The students were charged with negligence resulting in death. There have been many cases similar to this one resulting in litigation against the students who were involved.



- 3 Do not tolerate poor behavior. If a member of your drinking party begins to behave badly, intervene to stop them.**
- 4 If someone drinks too much...**

① Do not leave them alone. Take care of them.

→ Their condition could suddenly worsen, leading to death. Or they could become involved in accidents or other mishaps in their impaired state.

② Turn them on their side and cover them with a blanket.

→ Turning them on their side will prevent asphyxiation in the event that they vomit.
→ Covering them with a blanket will prevent their body temperature from rapidly falling.

③ Call an ambulance (119) if their condition seems to be worsening.

Examples of when to call an ambulance:

- They stop responding, even when shaken
- Their body temperature drops
- Their breathing becomes irregular
- They begin to vomit copiously



Towards a Drug-free Life : the Real Dangers of Illegal Drugs

Types of illegal drugs

In Japan, the major illegal drugs are marijuana, amphetamines, cocaine, heroine, synthetic (aka "loophole") drugs, psilocybin mushrooms, and MDMA (or other designer drugs). Of these, synthetic drugs are particularly dangerous. In order to avoid legal classification, their manufacturers often use unregulated chemicals that mimic the effects of other drugs.



Drug addiction

Addiction is the greatest risk of drug use. Drug addiction harms not only the user, but also their family and community.

Severe legal and academic penalties



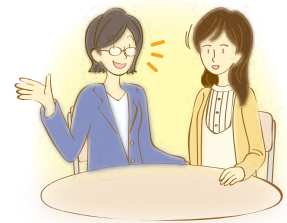
Drug use carries severe legal penalties in Japan. In addition, Tohoku University imposes academic penalties for drug-related offenses by students. These can include suspension or expulsion from the university. Do not use illegal drugs while studying in Japan. Have the courage to resist peer pressure if offered drugs, and be ready to walk away from any situation that seems dangerous to you. A true friend will never try to pressure you into taking drugs.

Drug/marijuana use on the rise

Recently, the yearly number of students in Japan arrested for marijuana and other drugs has been increasing. Tohoku University is no exception. In 2000, an instructor was arrested for amphetamines. In 2011, an international student was arrested for marijuana. More recently, in 2017 a group of international students was arrested for heroin, cocaine, and designer drugs. The risk of becoming involved in a drug-related incident may be greater than you think.



Stay Informed on City Laws and Ordinances



1. Ordinance forbidding aggressive soliciting in downtown Sendai

Details of the ordinance Sendai City website: <https://www.city.sendai.jp/kurashi/anzen/anzen/kyakuhiki/index.html>

- ① The employment of aggressive customer solicitors, such as shop touts etc., is forbidden in designated areas of Sendai.
- ② Specifically, shop touts, soliciting, waiting outside for customers, and loitering with the intent to solicit are illegal.
- ③ Those engaging in such activities will be issued a warning or an injunction against the relevant activity. First-time offenders are issued a warning. The second time, an injunction will be issued. For the third offense, the violator will be fined up to JPY 50,000, and their name and address may be reported.

Notes

- Do not accept the services of touts/solicitors. Instead, make a reservation at the restaurant and meet your party there.
→ If you accept the guidance of a tout when looking for a restaurant etc., you will often be overcharged. Also, to avoid blocking foot traffic and shop entrances, please do not loiter on sidewalks/arcades.
- When taking on part-time work, make sure you understand your duties; do not perform any duty that violates Japanese law.
→ Some students report they were hired as restaurant staff, only to be ordered to solicit customers when they started work.

Note: Please refer to the Ministry of Health, Labour and Welfare (MHLW) website for advice on labor laws and working part time. If you have a work-related problem, do not try to face it alone. Consult with someone you trust, call the MHLW counseling hotline (foreign languages are available), or make an appointment at the Tohoku University Counseling Office.

MHLW Labor Conditions Website (Japanese)



<https://www.check-roudou.mhlw.go.jp/>

On this site, you can find:

- 7 things you should know before starting a part-time job
- Basic knowledge about employment (workplace trouble and the law)
- Labor conditions FAQ
- Counseling services

2. Miyagi Prefecture Youth Health and Welfare Ordinance

This ordinance was enacted to promote the health and welfare of minors (persons age 6 to 17). A student was arrested for violating this ordinance some time ago. Specifically, the student violated clause 31 of the ordinance, which states that it is a crime for "anyone to commit lewd, sexual, or indecent acts with a minor."

Naturally, violators will face legal punishments. The university will also impose academic disciplinary measures (official reprimand, suspension, or expulsion) on students who violate this ordinance.

In general, always be mindful of your actions. Careless behaviors can deeply harm others and seriously disrupt the lives of all concerned, including you. Please remember that as students of this university you have an obligation to be considerate of others (respect their rights), observe all Japanese laws, use common sense and act responsibly.