

# GAKUSEI SHIEN DAYORI

TOHOKU UNIVERSITY  
GAKUSEISHIEN  
DAYORI2017.7.10 No. **8**

## CONTENTS

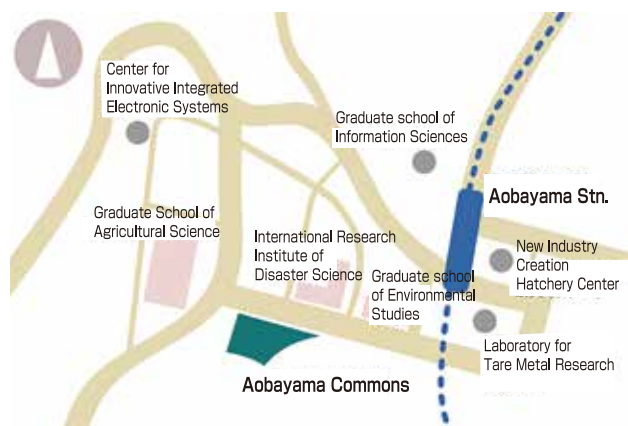
P1	P2	P3	P4
<ul style="list-style-type: none"> <li>● Opening of the Aobayama Commons</li> </ul>	<ul style="list-style-type: none"> <li>● Construction Work Complete at Kawauchi Grounds, Kawauchi Baseball Field, and Hyojogawara Athletic Field</li> <li>● Have a Sensible and Responsible Summer Vacation</li> </ul>	<ul style="list-style-type: none"> <li>● Being a Good Cyclist/Motorcyclist</li> </ul>	<ul style="list-style-type: none"> <li>● Student Health Care Center Announcements</li> <li>○ e-Cigarettes</li> <li>○ Health/Safety while Traveling Abroad</li> <li>○ Warning on Illegal Drugs</li> </ul>

## Opening of the Aobayama Commons

The Aobayama Commons contains the Faculty of Agriculture lecture rooms, Agricultural Library, and Learning Commons. There are also a cafeteria (Midori Shokudo), store (Midori Shop), and nurse's office. The Commons opened in spring 2017 as a shared space for studying, relaxing, and communicating.



Two-story building in the middle of the new campus, between the University Park and Campus Mall.



Three minute walk from the Aobayama subway station. The Aobayama area is green and surrounded by abundant natural scenery.



The Learning Commons Area encourages both independent learning and communication. Various events are held here too.



The loft offers ample natural lighting and seats that let students take in the scenery while they study. (Agricultural Library)

## Construction Work Complete at Kawauchi Grounds, Kawauchi Baseball Field, and Hyojogawara Athletic Field

The Kawauchi Grounds, Kawauchi Baseball Field, and Hyojogawara Athletic Field were refurbished in order to enhance university classes and extracurricular activities. Construction work was completed in December 2016. The main improvements are artificial turf and the addition of court lines on the Kawauchi Grounds, better drainage and soil improvement at Kawauchi Baseball Field, and the construction of an all-weather track, infield soil improvement, and the construction of a fence at Hyojogawara field.



Kawauchi Grounds



Kawauchi Baseball Field

On April 17, President Satomi and the department heads toured the Kawauchi grounds. During the tour, Nagatomi, director of the Physical Education Department, explained the facilities. President Satomi performed the inaugural throw on the American football field.



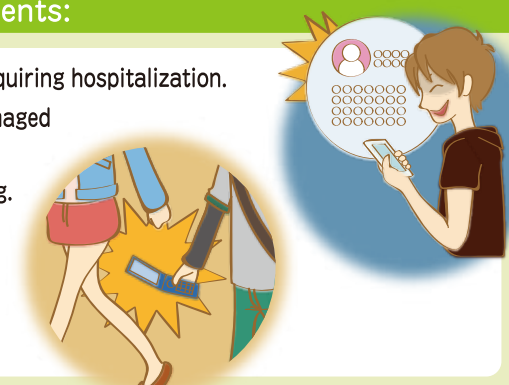
## Have a Sensible and Responsible Summer Vacation

Summer vacation is a great time to have experiences that you cannot try during normal campus life, such as retreats or long trips with clubs, internships, etc. **However, don't let your academic career be cut short by irresponsible or illegal activities during the break.**

Lately, many university students around Japan have been involved in **underage drinking, sexual assault, and Internet-related crimes.**

### Examples of crimes by students:

- Students allowed minors to drink at a party, leading to alcohol poisoning requiring hospitalization.
- Students engaged in competitive drinking at a club party and afterward damaged the drinking establishment.
- A student was arrested for groping a woman on the way home after drinking.
- A student tried to photograph under a woman's skirt on a station staircase.
- A student induced a minor to send nude photos.
- A student assumed the identity of another person and wrote slanderous things on a SNS.



Similar crimes have occurred at Tohoku University and other universities in Miyagi Prefecture. **We expect students to treat others with respect, and behave in a sensible and responsible manner at all times, both on and off campus.**

# Being a Good Cyclist/Motorcyclist

Although we periodically issue reminders about good commuting etiquette, we have received numerous complaints, from both inside and outside the university, regarding the road manners of students commuting by bicycles and motorcycles. **The complaints are centered on the commuting route between Hachiman and Kawauchi, and the Kawauchi campus intersections and hills. The reports describe students endangering pedestrians, riding on the wrong side of the road, suddenly pulling in front of cars/people, and going too fast. All of these actions could lead to accidents.** Please observe all traffic rules and ride safely. **Doing so will protect you as well as others.**



## Cycling Red Card Worst 3

- 1 Wearing headphones etc. while cycling
- 2 Failing to use bicycle light at night
- 3 Endangering pedestrians

(Ex. Obstructing the sidewalk by riding two abreast etc.)



Use the QR code to read specific examples of dangerous cycling. Take some time to reevaluate your own cycling habits.

<http://www.city.sendai.jp/jitensha/kurashi/anzen/anzen/kotsu/kaise/documents/gyukougimuka.pdf>



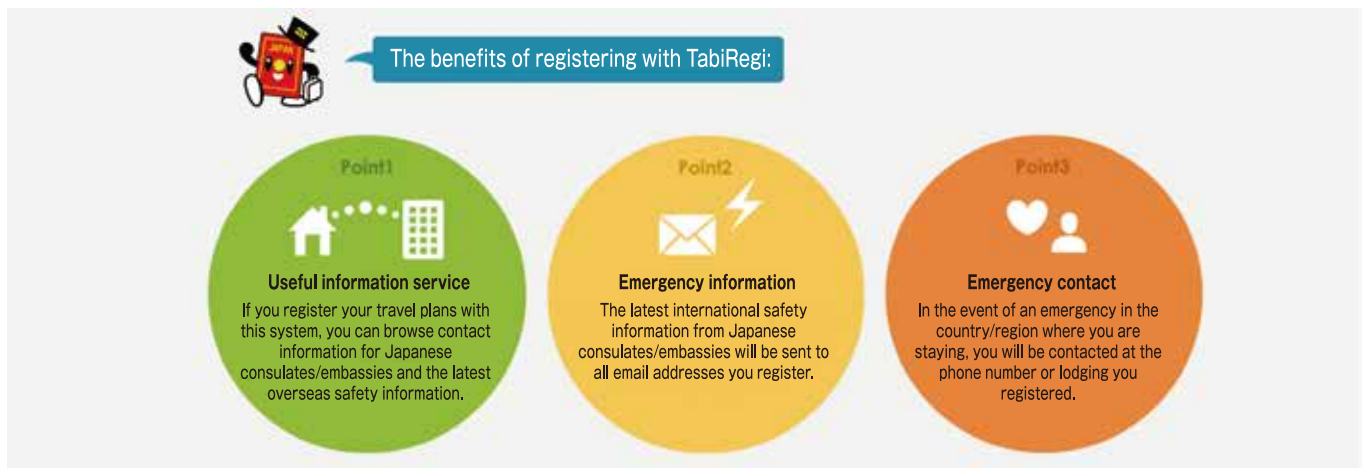
# Student Health Care Center Announcements

## e-Cigarettes

Recently, e-cigarettes and vape pens are growing in popularity. It is commonly believed that these have few health risks and do not produce second-hand smoke, but this is a misconception. The fumes from these devices contain harmful substances that are dangerous to the users and those nearby. Moreover, the long-term effects have not been adequately studied, and their effectiveness as a means for quitting smoking has not been proven. Consequently, many international health organizations, including WHO, have issued warnings regarding the risks of e-cigarettes. We urge you to avoid habitually using e-cigarettes/vape pens, as well as traditional forms of tobacco. Smoking, e-cigarettes, and vaping, are not permitted on any of Tohoku University's campuses.

## Health/Safety while Traveling Abroad

More and more students travel and study abroad during summer vacation. Before going overseas, please be sure to find out about any contagious diseases prevalent at your destination, get any necessary vaccinations, and research the living environment, travel warnings, and other local conditions. We also recommend enrolling in travel insurance, taking along some over-the-counter medicines (e.g. cold medicine etc.), and looking into drinking water/food safety conditions at your destination. In addition, please register with TabiReg, the Ministry of Foreign Affairs travel registration system (for trips lasting less than three months). By registering your travel dates, destination, and contact information, this system enables you to obtain the latest overseas safety information and urgent notifications by email, and remain in contact in the event of an emergency. We strongly recommend registering with TabiReg to mitigate risk while traveling abroad.



(Source: Ministry of Foreign Affairs of Japan <https://www.ezairyu.mofa.go.jp/tabireg/>)

## Warning on Illegal Drugs

Use of drugs, such as marijuana, amphetamines, and so-called "loophole drugs" has become a social issue. A number of university students have been arrested for their possession or use. Drug addiction has severe physical, mental, and psychological effects. It harms not only the users, but their families and the community as a whole. Using, buying, selling, producing, and possessing illegal drugs is a crime in Japan. No exceptions are made for medical use, even if you have a prescription (e.g. for marijuana) from a physician in your home country. It is important to firmly resist such drugs when faced with opportunities to obtain them, pressure from peers and authority figures, or even your own curiosity. Please keep in mind that being a university student comes with both privileges and obligations, and behave responsibly. There have also been cases of travelers being exposed to drugs while overseas, and later bringing or mailing them back to Japan, or even becoming drug mules themselves. Please be sufficiently cautious when traveling abroad.



Source : "For a drug-free school life" poster  
(made by MEXT, MHLW and National Police Agency)